



# INDOFINE Chemical Company, Inc.

121 Stryker Lane, Bldg. 30, Suite 1 • Hillsborough, NJ 08844 • U.S.A.

Phone: (908) 359-6778 • FAX: (908) 359-1179

website: [www.indofinechemical.com](http://www.indofinechemical.com)

e-mail: [chemical@indofinechemical.com](mailto:chemical@indofinechemical.com)

## CERTIFICATE OF ANALYSIS

Catalog Number: 020976S

Product Name: **CATECHIN with HPLC**  
(3,3',4',5,7-Flavanepentol; 3,3',4',5,7-Pentahydroxyflavan)

CAS Number: [154-23-4]

Lot Number: 1305325

Chemical Formula: C<sub>15</sub>H<sub>14</sub>O<sub>6</sub>

Molecular Weight: 290.28

Appearance: Faint pink powder

Loss on drying: 1.5%

Botanical Source: Green Tea

Storage: Store in a cool, dry place. Protect from light.  
Store at 2-8°C

NMR Spectrum: Enclosed

Purity(HPLC): 99.05%





# INDOFINE Chemical Company, Inc.

121 Stryker Lane, Bldg. 30, Suite 1 • Hillsborough, NJ 08844 • U.S.A.

Phone: (908) 359-6778 • FAX: (908) 359-1179

website: [www.indofinechemical.com](http://www.indofinechemical.com)

e-mail: [chemical@indofinechemical.com](mailto:chemical@indofinechemical.com)

## HPLC ANALYSIS



Catalog No.: 020976S

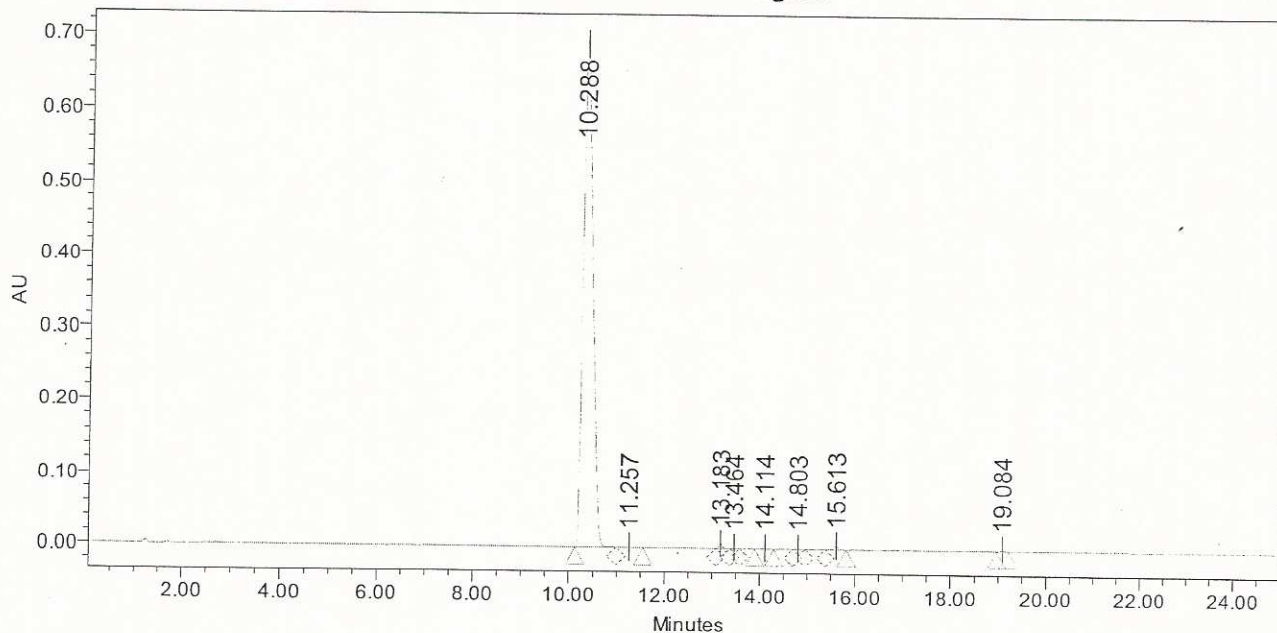
Product name: Catechin

Lot No.: 1305325

Sample Name: Catchin  
Sample Type: Unknown  
Vial: 1:C,6  
Injection #: 1  
Injection Volume: 25.00 ul  
Run Time: 25.0 Minutes

Acquired By: System  
Sample Set Name:  
Acq. Method Set: Catchin  
Processing Method: QC  
Channel Name: 278.0nm  
Proc. Chnl. Descr.: PDA 278.0 nm

Auto-Scaled Chromatogram



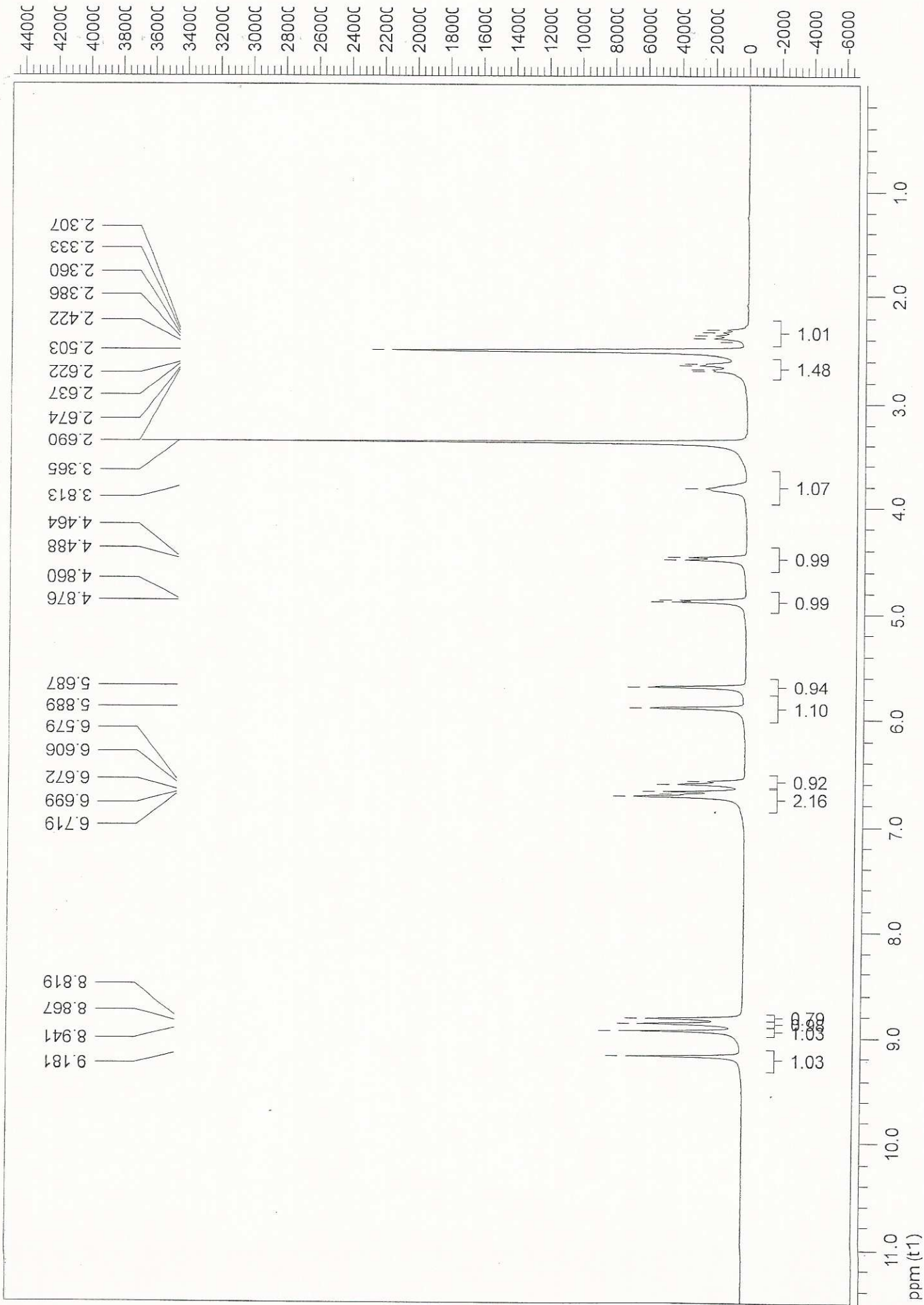
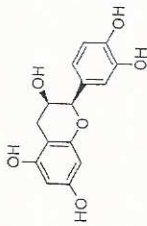
Peak Results

| Name | RT     | Area    | % Area | USP Plate Count | USP Resolution |
|------|--------|---------|--------|-----------------|----------------|
| 1    | 10.288 | 9397914 | 99.05  | 10358.76        |                |
| 2    | 11.257 | 5434    | 0.06   |                 | 2.41           |
| 3    | 13.183 | 32373   | 0.34   | 151734.92       | 7.14           |
| 4    | 13.464 | 3825    | 0.04   | 119860.26       | 1.92           |
| 5    | 14.114 | 6776    | 0.07   | 57273.21        | 3.36           |
| 6    | 14.803 | 3643    | 0.04   | 129593.85       | 3.44           |
| 7    | 15.613 | 31046   | 0.33   | 143600.75       | 4.78           |
| 8    | 19.084 | 7306    | 0.08   | 317039.57       | 22.71          |



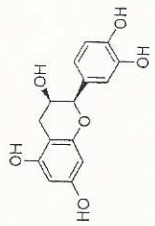
INDOFINE Chemical Company, Inc.  
121 STRYKER LANE  
BLDG. 30, SUITE 1  
HILLSBOROUGH, NJ 08844

Catalog No.: 020976S  
Product name: Catechin  
Lot No.: 1305325





INDOFINE Chemical Company, Inc.  
121 STRYKER LANE  
BLDG. 30, SUITE 1  
HILLSBOROUGH, NJ 08844



Catalog No.: 020976S  
Product name: Catechin  
Lot No.: 1305325

